

LOCATION MAP



B/h Shiv Ugati, Nr. Shilpgram Saral, S.p. Ring Road, Hanspura, Ahmedabad.

Contact No.: +91 95 37 36 36 34

E-mail : shreecorporation2021@gmail.com

Architect
SHAPERS360°
ARCHITECTS & CONSULTANTS

Developer
Shree
CORPORATION

Structural Engineers
KANHAI
ENGINEERS
STRUCTURAL ENGINEERING SOLUTIONS



BHAKTI PEARL

2 BHK Lavish Apartments


Hanspura






BHAKTI
PEARL

Perfection of
Nature & Luxurious Life...

2 BHK Lavish Apartments



GYM AREA



INDOOR GAMES



GAZEBO



MULTIPURPOSE COURT



YOGA DECK



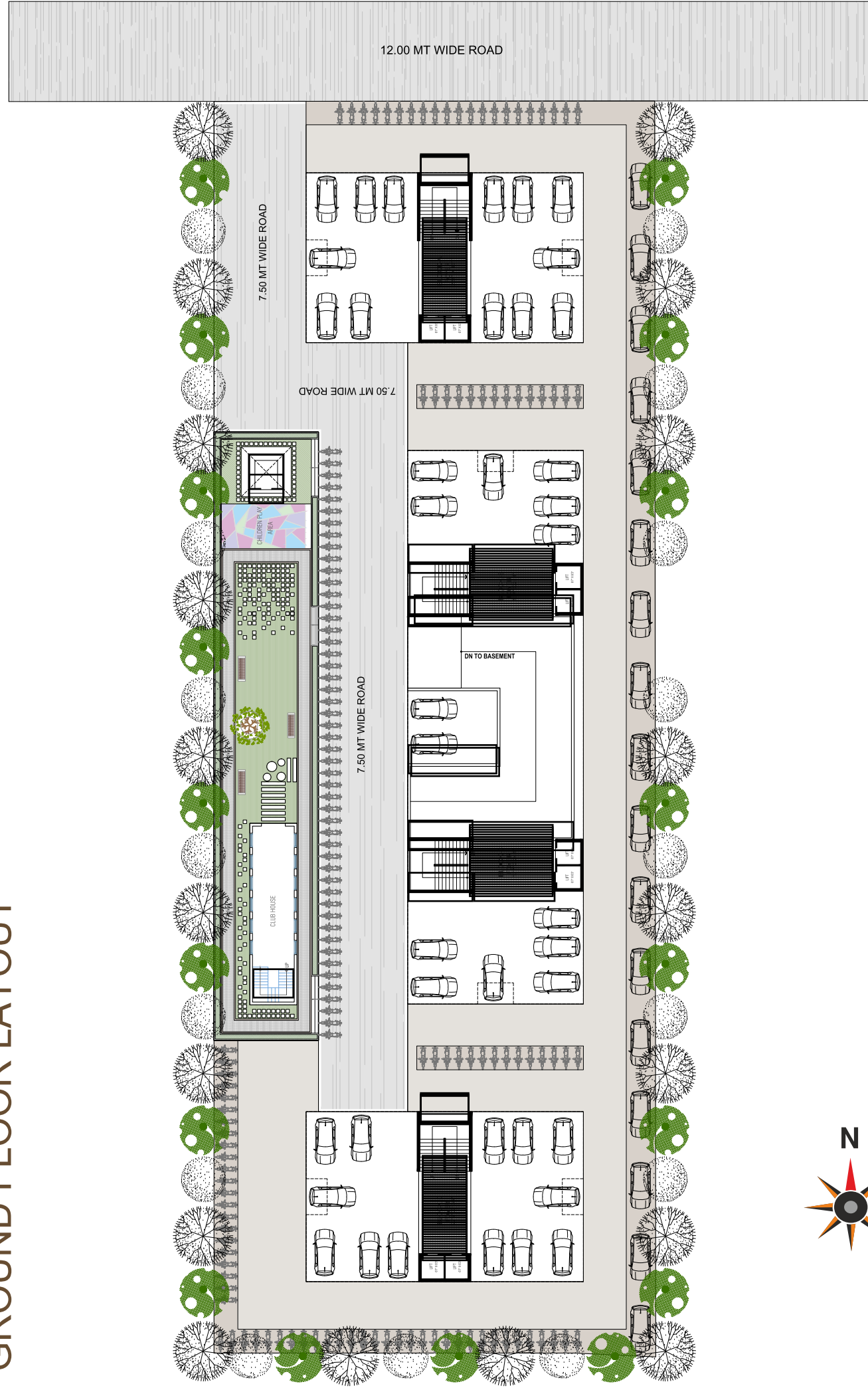
PLAY AREA



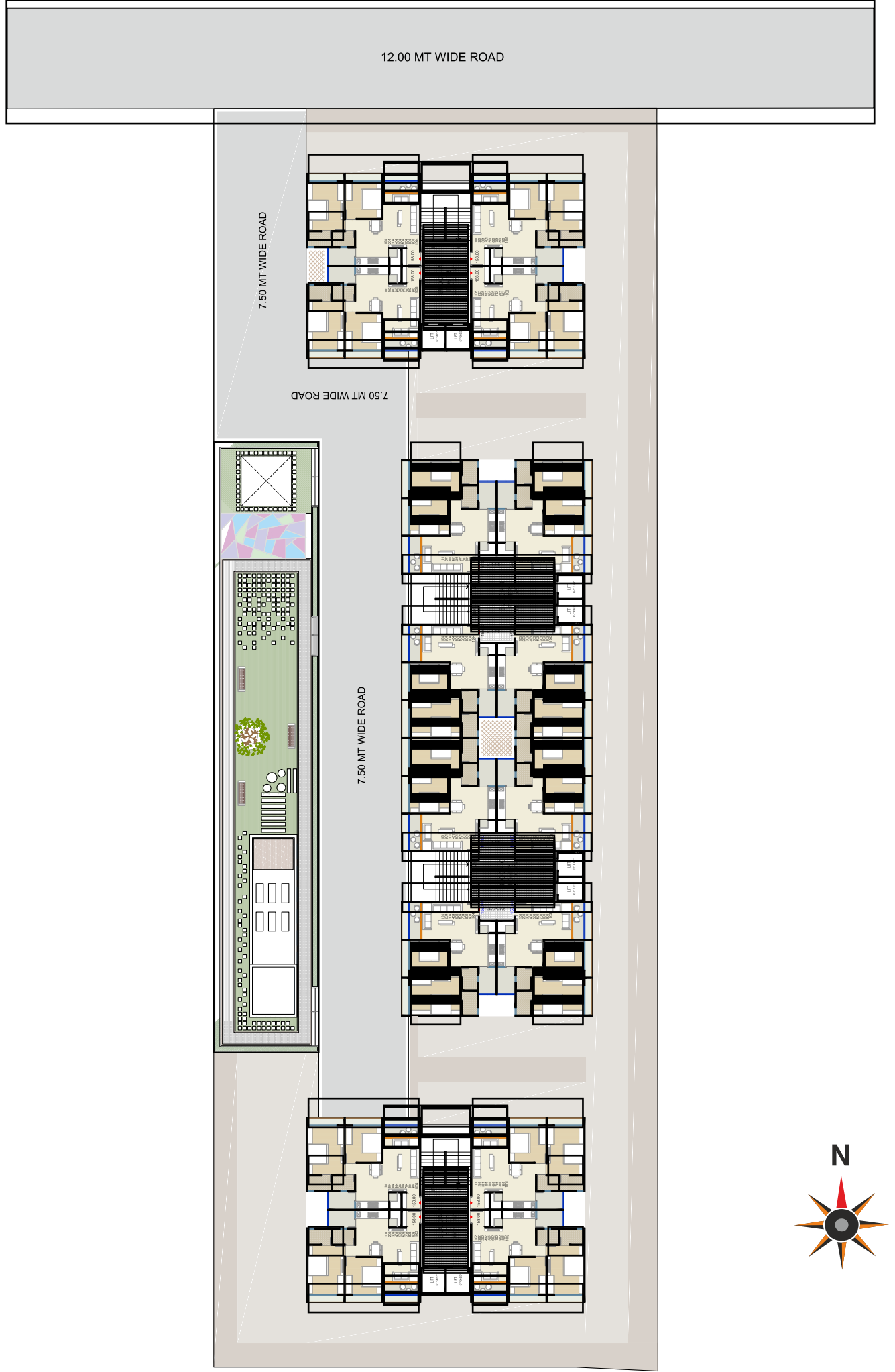
BHAKTI PEARL

A unique fusion of
convenience and luxury.

GROUND FLOOR LAYOUT

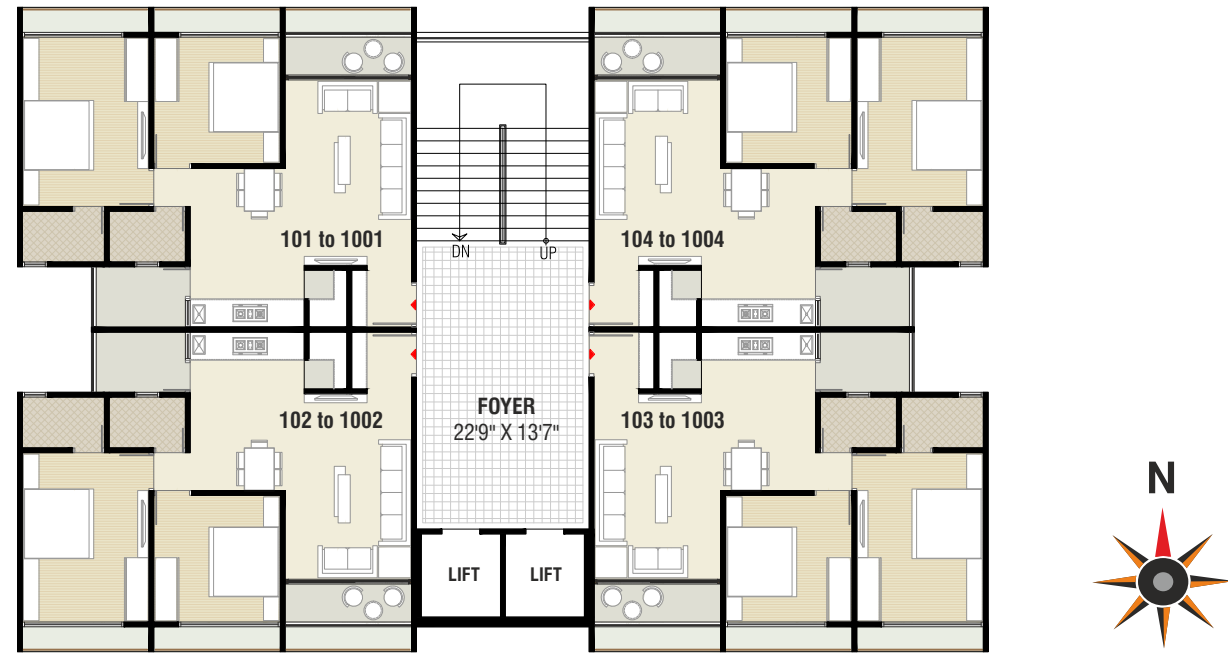


TYPICAL FLOOR LAYOUT



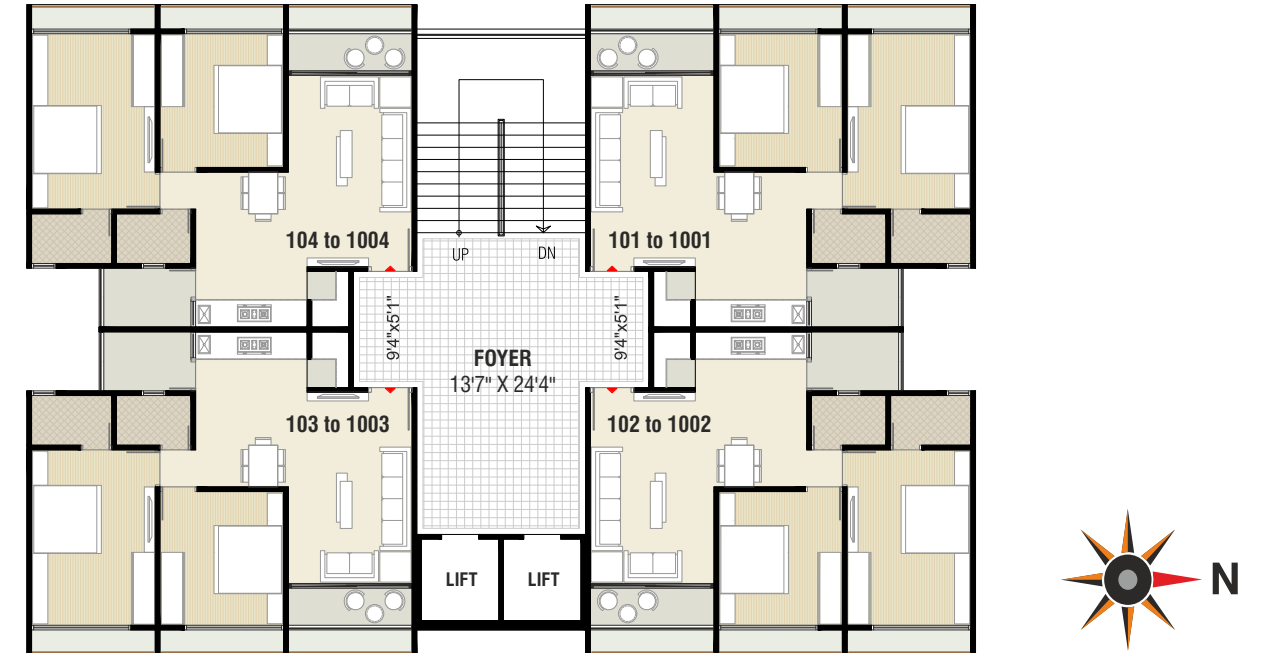
Typical Floor Plan

Block A & D

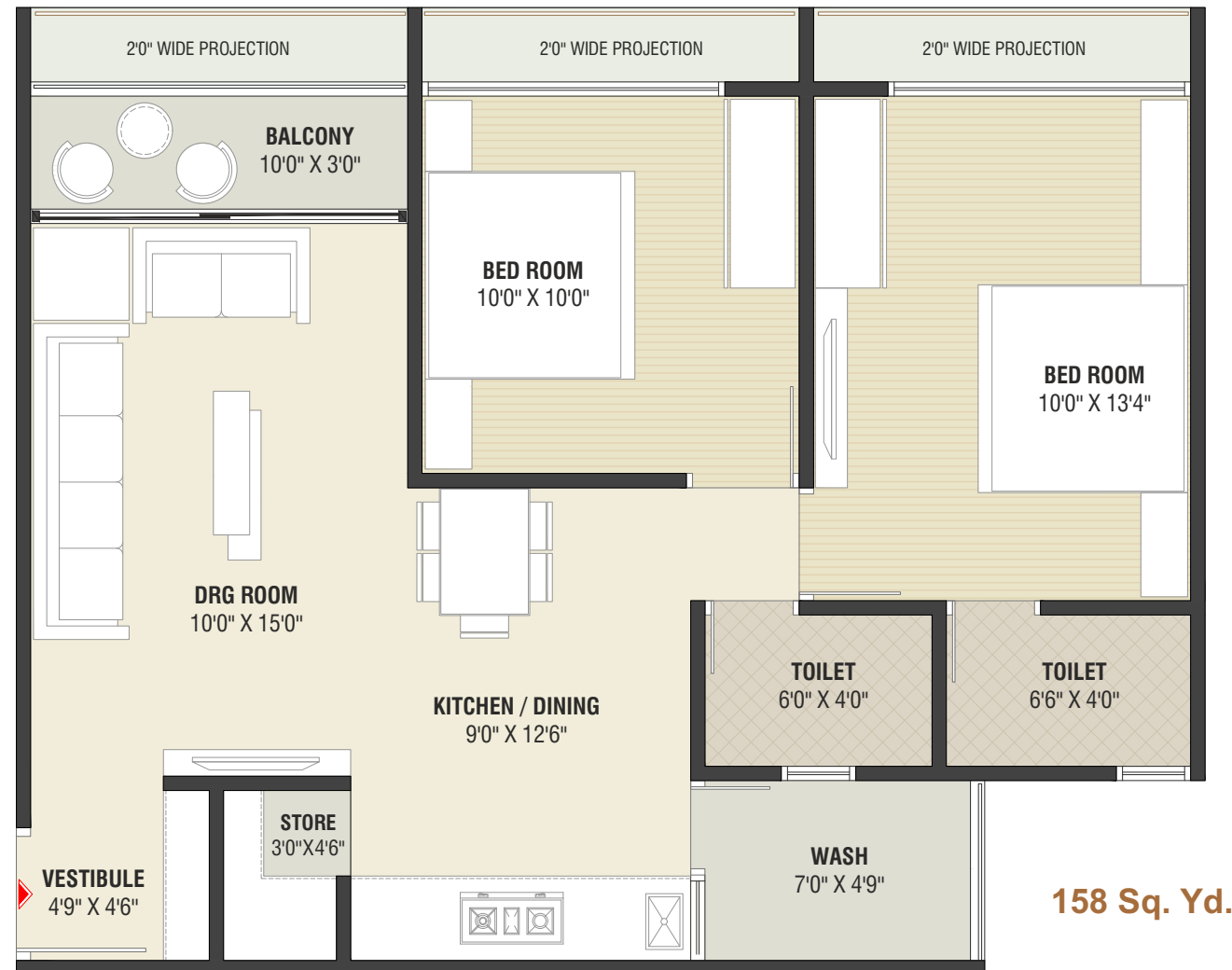


Typical Floor Plan

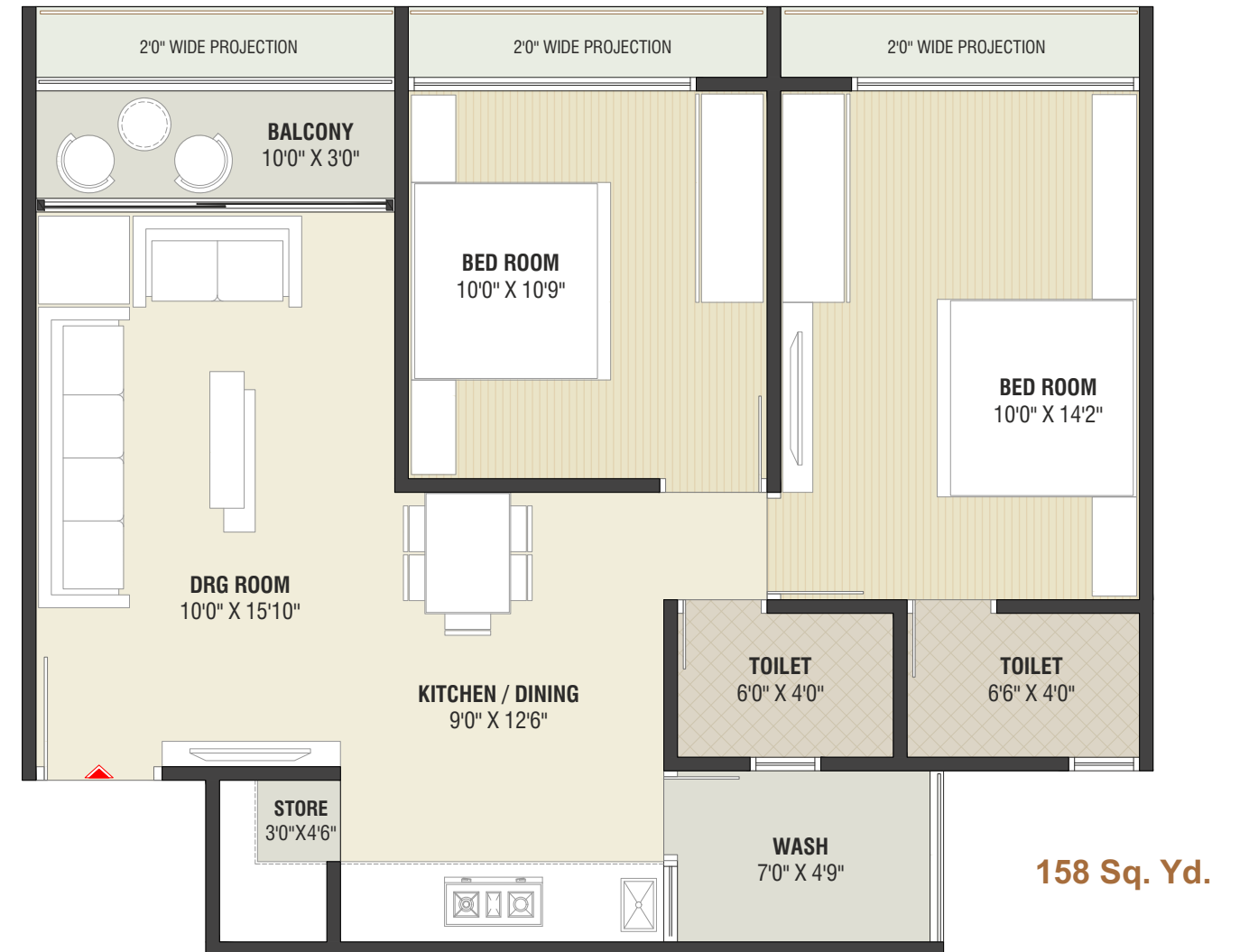
Block B & C



Unit Floor Plan



Unit Floor Plan



30⁺ amenities

Sophisticated
Style

Modern
Amenities

Urban
Location



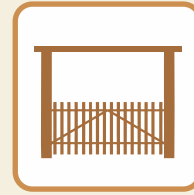
SECURITY CABIN



SOCIETY OFFICE



CONFERENCE ROOM



ENTRY GATE WITH AUTOMATIC BARRIER



BASEMENT PARKING



2 AUTO LIFTS PER BLOCK



BLOCK ENTRANCE FOYER



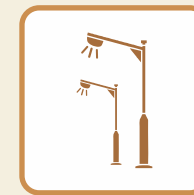
INDOOR GYM AREA



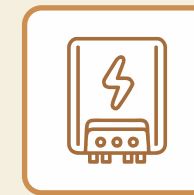
GARDEN SEATING AREA



LETTER BOXES



STREET LIGHT



ELECTRIC METER PANEL



INDOOR GAMES AREA



PUMP ROOM



COMMON WASHROOMS



POWER BACKUP D.G. SET



NAME PLATE



24 hrs. WATER SUPPLY



FLOOR GAMES



CHILDREN PLAY AREA



MULTI PURPOSE COURT



PRESSURE PUMP SYSTEM



FIRE FIGHTING & SPRINKLER SYSTEM



MEDITATION & YOGA AREA



GREEN PLANTATION



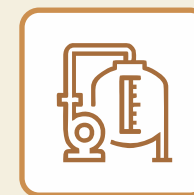
CCTV & SURVEILLANCE



24 Hrs. SECURITY



GAZEBO SITTING



COMMON BORE, U.G. & O.H. WATER TANK



WATER METER

SPECIFICATIONS

Structure:

Earthquake resistance RCC Frame structure.

Plaster:

Smooth finish mala plaster on inside walls and double coat sand face plaster and acrylic texture on exterior

Flooring:

Premium brand vitrified tiles in all areas, lintel level premium brand GVT tiles in bathrooms and kitchen. Water proofing in all bathrooms

Terrace:

China mosaic flooring with water proofing, for heat and leakage protection

Kitchen:

Granite platform with SS Sink, with GVT tiles up to lintel level with gas stove point

Bathrooms and toilets:

Branded sanitary ware and CP fittings, with anti-skid tiles on floor and wall tiles up to lintel level. Geyser point in all bathrooms.

Plumbing:

Premium brand CPVC and UPVC & SWR pipes for water supply, drainage and solid waste systems.

Doors and Windows:

Decorative laminated main door and all other flush doors. Aluminum section windows with granite framing

Electrification:

Concealed single phase wiring with adequate electrical points in all areas, with ISI copper wire and premium brand modular electrical accessories. Distribution panel with MCB, ELCB & RCCB. AC point with copper pipe in master bedroom.

Note :

Developers reserves the right to make any change in the plan and layout of the building.

No changes are allowed in elevation.

All the details in this brochure are just for understanding.





BHAKTI
PEARL



BHAKTI PEARL



The ideal
space to balance
life, work and play.

